

# ROBUST

## OIL FLOODED ROTARY SCREW AIR COMPRESSORS

Reliable, Energy Efficient,  
Quieter, Easier to Maintain.  
Flow from 30 cfm to 3700 cfm  
Pressure range 3 to 13 bar(g)



## GL SERIES - Rotary Screw Air Compressors

### Design Features of the GL Series



- Single-stage rotary screw air-ends are engineered for higher durability.
- Larger rotors allows for bigger bearings.
- 30%-50% slower rotor speeds results in less power consumption,
- One piece bearing housing ensures both rotors are rigidly held by the bearings in proper alignment during transient periods such as machine startups/shutdowns or load changes.
- Discharge port matches ratios of volume and operating pressure for maximum efficiency.
- The axial and rotational loads are supported by appropriate bearings for longer air end life.
- Continuous cooling and circulation of lubricating fluid, ensures longer air end operating life.
- Simple package design requires only minimum maintenance for optimum performance.

### Highly Efficient GRD Rotors



- GRD series rotors are highly efficient and renowned for their 5/6 profiles which has evolved from previous generations to meet today's market requirement – "Energy and cost efficiency with greater capacity".
- The clearance between rotors is far smaller compared to the conventional (4/6 profile) rotors; contact occurs only on a lubricated pitch line, so wear is virtually eliminated.

### High Efficiency Drive Motors

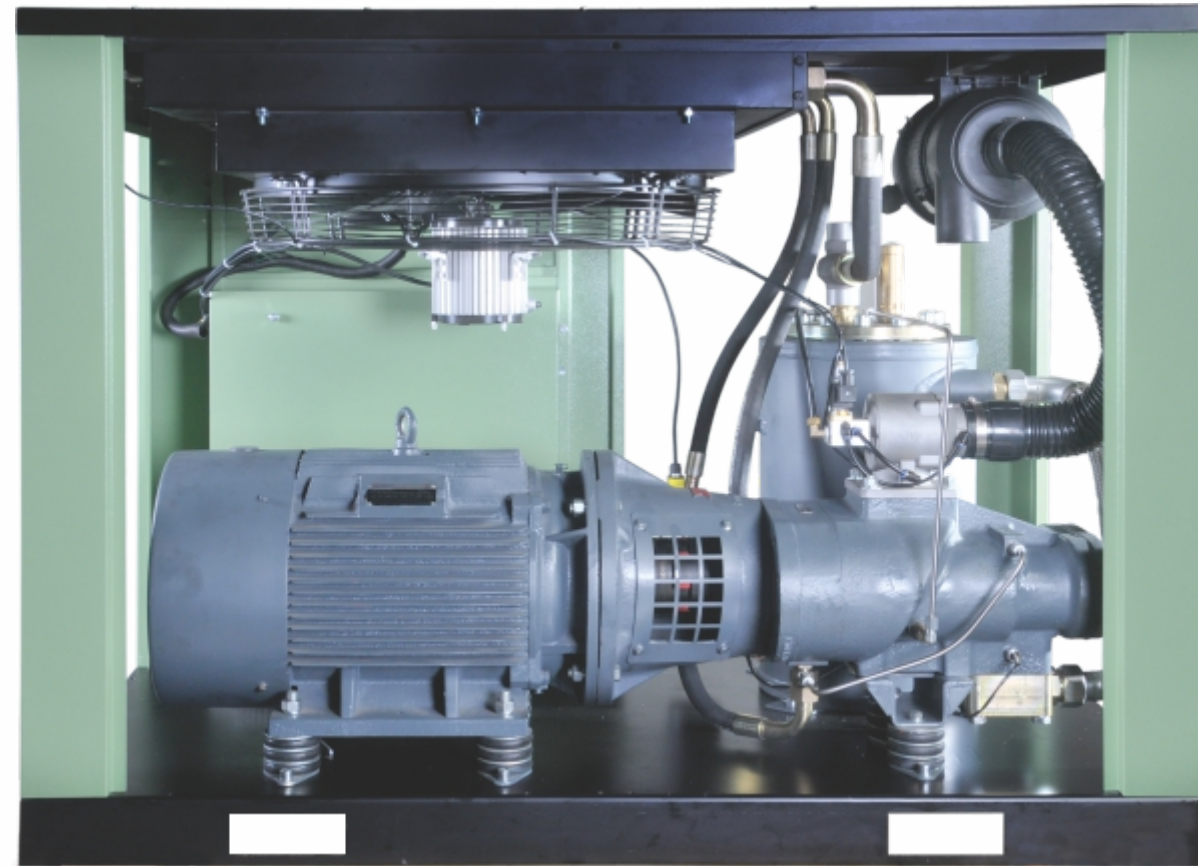


- IEC high efficiency TEFC motors.
- High temperature F class insulation rating.
- Direct coupling design for extended bearing life.
- Easy maintenance with grease refill port.



### Electrical Control Protection

- Single phase protection.
- Phase sequence protection
- High discharge temperature shutdown.
- Auto-dual control: If there is no system demand during the pre-set time delay, the compressor will shut down the drive motor. The controller will restart the compressor when system pressure drops to the preselected pressure level.
- No load start protection. Automatic blow down during unloading before the unit shuts off ensures the unit does not start under load.



### Versatile Package Control System

- Minimum pressure check valve assures continuous pressure for lubricating the compressor, reduces fluid foaming and protects the air-fluid separator element.



Inlet valves with control valves

### Integrated Microprocessor Controller



- User friendly.
- Constant readout of pressure and temperature.
- Selective readout of all operating and maintenance parameters.
- Safety shutdown.
- Provides 24hours automatic start-stop operation.
- Lead-lag and sequencing with multiple compressors.
- Maintenance reminders.

### Superior filtration System

- Ultra efficient inlet air filters provide clean air that traps dirt particles to less than 3 microns.
- Easy spin on Oil filters.
- Pressure differential gauges for easy filter maintenance.



## OUR PORTFOLIO OF PRODUCTS & SERVICES.



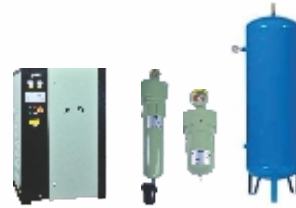
Industrial Air Compressors



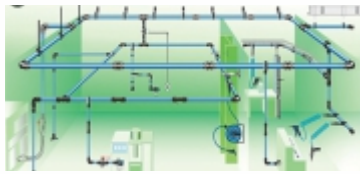
Industrial Energy Efficient Air Blowers



Supply & Demand Side  
Control System – ICC/IFC



Air Dryer/Filters/Receivers



Aluminum Piping Projects



ETP/CETP Solutions



### REGISTERED OFFICE: GODREJ & BOYCE MFG.CO.LTD

Godrej Electricals & Electronics, Compressed Air Solutions, Pirojshanagar, Vikhroli, Mumbai - 400 079. Tel.: +91-22-67962251 to 2259 Fax: +91-22-67961410 / 1525. E-mails: casene@godrej.com | Website: www.godrej-airsolutions.com

### BRANCH ADDRESS:

#### NEW DELHI:

Godrej Bhawan, Sher Shah Suri Marg, Okhla,  
New Delhi - 110 065.  
Tel: 011-6650 7192 (D). Fax: 011-6650 7056.

#### CHANDIGARH:

Plot No. A-40, Phase-VIII-A, Industrial Area,  
Mohali - 160 059.  
Tel: 0172-5037 777, 5037 788.

#### JAIPUR:

502-506, 5th Floor, Gaurav Tower - 1,  
Malviya Nagar, Jaipur - 302017.  
Tel: 0141-6701 614. Fax: 0141-2545 596.

#### AHMEDABAD:

APM Shopping Mall, 4th Floor, Shyamal-Karnayati,  
100 ft Road Satellite, Ahmedabad - 380 051.  
Tel: 079-6606 0623. Fax: 079-6606 0700.

#### CHENNAI:

1, SIDCO Industrial Estate, Ambattur,  
Chennai - 600 098.  
Tel: 044-6654 4444, 4460.  
Fax: 044-6654 4445.

#### BANGALORE:

1st Floor, The KFCC Building, No. 28, 1st Main,  
Crescent Road, High Grounds, Bangalore - 560 001.  
Tel: 080-6647 2000. Fax: 080-22374673.

#### HYDERABAD:

201 & 202, Lala - 1, Landmark 5-4-94 to 97,  
2nd Floor M. G. Road, Ranigunj,  
Secunderabad - 500 003. Telangana State.  
Tel: 040-6643 1000. Fax: 040-6643 1039 / 1200.

#### VIJAYWADA:

Survey No.: 202/1D, 204/5D & 204/6D,  
Enikepadu - 521 108, Vijayawada Andhra Pradesh,  
Tel.: 040-6643 1000.

#### KOLKATA:

Salt Lake City, Sector - V, Block - GN,  
Plot No. 30, Kolkata - 700 091.  
Tel: 033-6601 3829.  
Fax: 033-2357 8271.

#### RAIPUR:

Plot No.9/1, Mahoba Bazar,  
Raipur - 492 001(C.G).  
Tel: 0771-6606 609.